



**ACCORDO QUADRO DELLA DURATA DI ANNI TRE PER LA
MANUTENZIONE DELLA SEGNALETICA SULLE STRADE
PROVINCIALI RICADENTI NELL'AREA 3 "CENTRO-SUD"
PERIODO 2022-2025**

PROGETTO DEFINITIVO/ESECUTIVO

CARTA STRADALE DELL'AREA

I Progettisti:

Arch. Massimo Betti

Geom. Stefano Stanghini

Il Responsabile del Procedimento:

P.E. Paolo Mancianti

Siena, agosto 2022

Elaborato N. **3**



PROVINCIA DI SIENA

Servizio Mobilità Provinciale

Piazza Duomo, 9 - 53100 SIENA

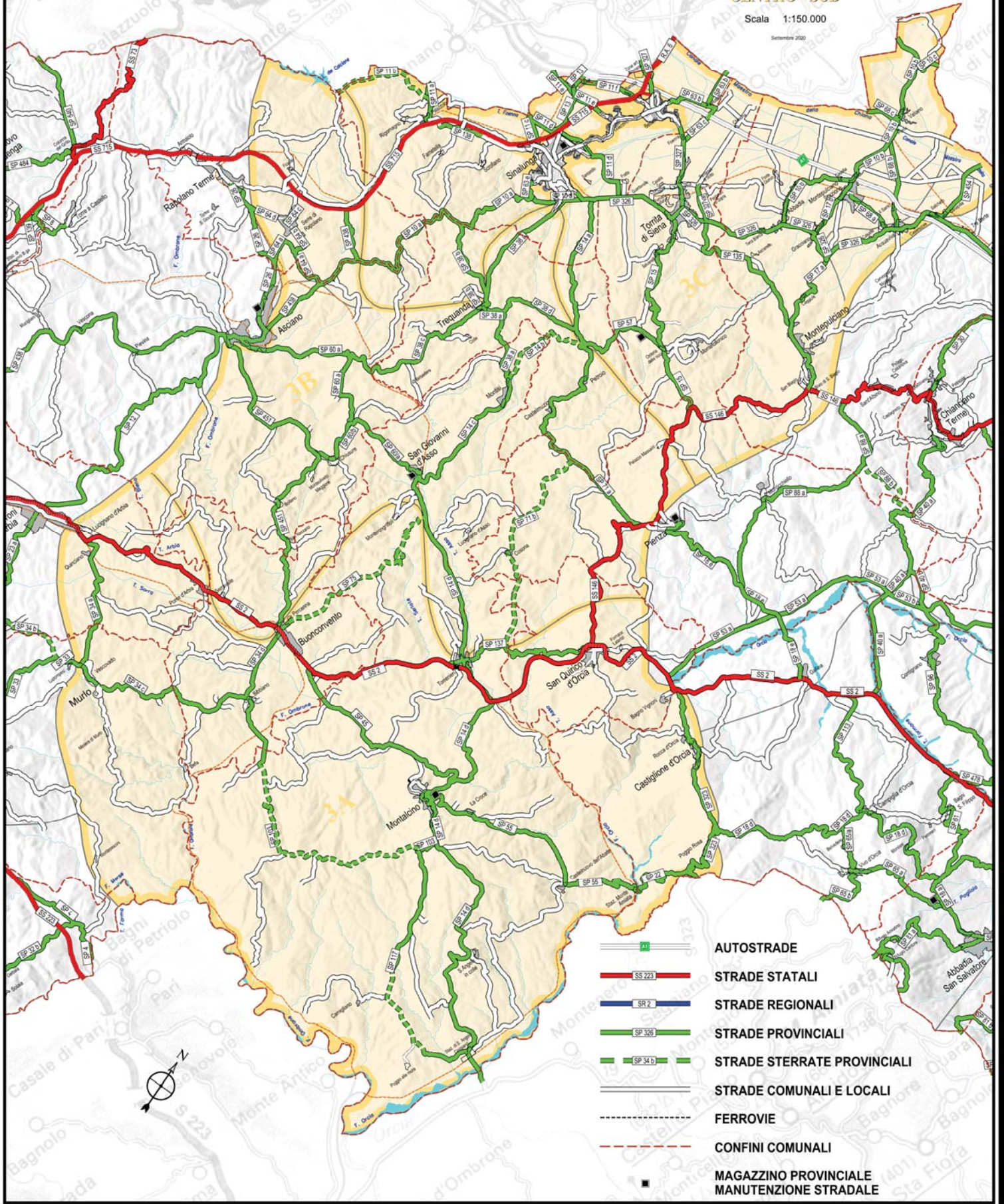
Tel. 0577 2411 - Fax 0577 241202



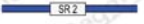
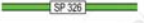
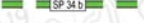




CARTA STRADALE
DELLA PROVINCIA DI SIENA

AREA 3
CENTRO - SUD

Scala 1:150.000

Settembre 2020



-  AUTOSTRADE
-  STRADE STATALI
-  STRADE REGIONALI
-  STRADE PROVINCIALI
-  STRADE STERRATE PROVINCIALI
-  STRADE COMUNALI E LOCALI
-  FERROVIE
-  CONFINI COMUNALI
-  MAGAZZINO PROVINCIALE
MANUTENZIONE STRADALE